

VISION FOR YOUR FUTURE

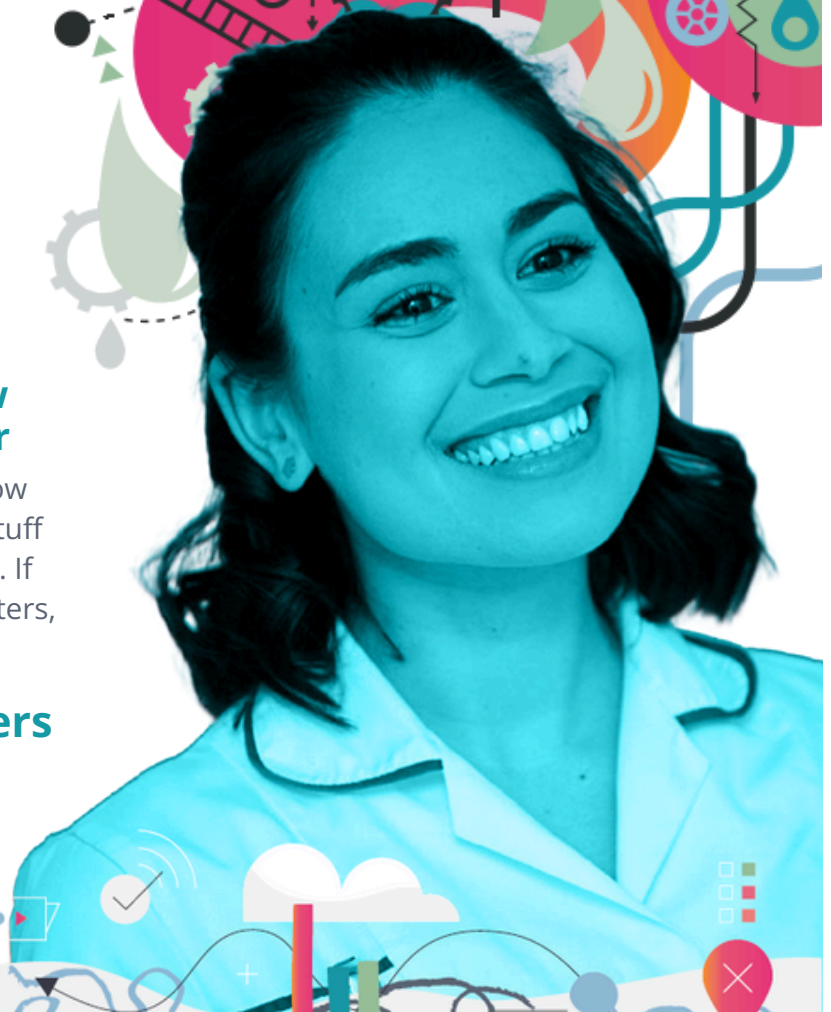
Orthoptists are specialists in how the eyes move and work together

They link the development of eyesight with how the brain controls the eyes. It's cutting-edge stuff and makes a huge difference to patients' lives. If you enjoy science and want a career that matters, orthoptics could be for you.

www.orthoptics.org.uk/careers



**SCAN
ME!**





BIOS

BRITISH AND IRISH
ORTHOPTIC SOCIETY

ORTHOPTISTS ARE SPECIALISTS IN HOW THE EYES MOVE AND WORK TOGETHER

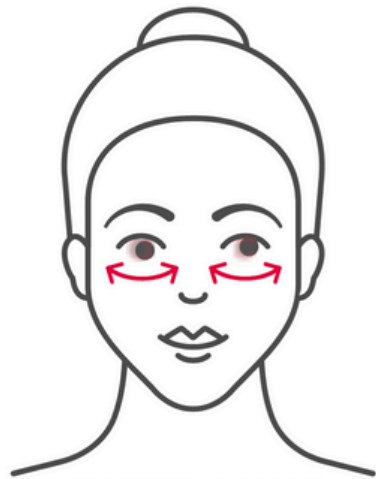
They see both children and adults with a range of eye conditions, including:



AMBLYOPIA
(weak or "lazy" eye)



STRABISMUS
(eye turn or "squint")



NYSTAGMUS
(continuous uncontrolled eye movements)



DIPLOPIA
(double vision)

HOW DO THEY HELP?



Advice



Glasses



Eye patches



Eye exercises



Prisms



Medicines

Find out more at

orthoptics.org.uk/what-is-an-orthoptist

Orthoptics

Vs

Optometry

What is it?

Orthoptists diagnose and treat defects of vision and abnormalities of eye movement.

Optometrists examine eyes, give advice on visual problems and prescribe and fit glasses or contact lenses.

How long is the course?

Undergraduate entry: 3/4 years (depending on institution) leading to a degree in Orthoptics following which you can practice as an Orthoptist.

3 years at university leading to a degree in optometry plus a further year of pre-registration experience + further clinical exams

Where can you work?

Mainly in hospitals for the NHS but there are options to specialise or work privately.

Mainly in high street optometrists but some work in hospitals.

What is the starting salary?

You start at a band 5 salary within the NHS.
<http://www.nhscareers.nhs.uk/working-in-the-nhs/pay-and-benefits/agenda-for-change-pay-rates/>

Salaries range within the business sector. Please note, salaries advertised often include bonuses for reaching sales targets. NHS optometrists start on band 6 (after pre-reg year)

What are the employment rates?

High employment rates.

As university places are limited, there are steady numbers of professionals graduating each year, because of this there is less competition for jobs.

University places are not limited, there are not enough pre-registration places for all graduates, and without completing a pre-registration year you would be unable to qualify.

Following qualification there are a lot of jobs available, but with the increased numbers of graduates in recent years, there is significant competition.



University of Sheffield

Orthoptics (BMedSci) at Sheffield

The University of Sheffield is an internationally recognised research-focused Russell Group university.

We have excellent Orthoptic teaching and clinical skills facilities, many of which are based inside the Medical School and Sheffield Teaching Hospitals, placing you within a clinical teaching environment.

We are committed to research-led teaching which will put you at the cutting edge of your discipline.

A-Level & GCSE requirements

A Level: BBB including one science subject (Biology/Human Biology, Chemistry, Maths, Physics or Psychology)

GCSE: Maths, English and Science grade 4/C

BTEC requirements

Pearson BTEC Level 3 National Extended Diploma in Applied Science will be considered at DDD.

Access to HE Diploma | 60 credits overall in a relevant subjects, with 45 credits at Level 3, including 24 credits at Distinction and 21 credits at Merit

Any queries regarding alternate qualifications please visit the website:
sheffield.ac.uk/undergraduate/courses/2025/orthoptics-bmedsci#entryreqs

Or email the admissions team at: orth-admissions@sheffield.ac.uk

Contact

For any additional admissions queries please contact: orth-admissions@sheffield.ac.uk



As a founding member of the Russell Group of research intensive universities, the University of Liverpool draws on over 100 years of teaching delivered by dedicated staff with real-world, practical experience and are a hub for an extensive network of professionals, academics and researchers.

You can be confident that a degree from the School of Health Sciences will prepare you for a lifelong career making a difference in today's multidiscipline, patient-focused healthcare services.

A-Level & GCSE requirements

A Level: BBB including one of Biology, Chemistry, Mathematics, Physics or Psychology.

GCSE: 5x GCSE subjects at grade A*-C or grades 9-4. Subjects to include English Language, Mathematics and a Science.

BTEC requirements

Pearson BTEC Level 3 National Extended Diploma in Applied Science and Health and Social Care will be considered at DDD.

Pearson BTEC Level 3 National Extended Certificate: Accepted at a minimum of D accompanied by 2 A-Levels at grade B (A levels must include one of the following: Biology, Chemistry, Maths, Physics or Psychology).

Pearson BTEC Level 3 National Diploma (120 Credits) in either Health and Social Care or Applied Science at Grade DD, PLUS 1 additional A Level at a minimum of Grade B.

Contact

Any queries regarding alternate qualifications please visit the website:
liverpool.ac.uk/courses/2025/orthoptics-bsc-hons#entry-requirements

For any additional admissions queries please contact: shs@liverpool.ac.uk



UNIVERSITY OF
LIVERPOOL

Orthoptics (MSc) at Liverpool

Liverpool also offers an MSc pre-registration course in Orthoptics, for those who already have a degree in a relevant subject (such as biological sciences, chemistry, nursing or psychology), providing the same essential knowledge and skills via an accelerated route.

Entry requirements

Applicants with a minimum 2:2 Bachelor's degree in a relevant discipline from a UK university or an overseas qualification of an equivalent standard. Relevant subject areas include: biological sciences, chemistry, nursing and psychology. Shortlisted candidates will be invited to a group interview.

Contact

Any queries regarding alternate qualifications please visit the website:
liverpool.ac.uk/courses/2024/orthoptics-pre-registration-msc#entry-requirements

For any additional admissions queries please contact: shs@liverpool.ac.uk

The 4-year programme at GCU enables students to study along side Optometrists and Ophthalmic dispensing students.

Our course is dedicated to preparing students for the roles they need to fulfil now but also to preparing students for extended roles and future developments in Ophthalmology.

Our modern city centre campus allows students to gain experience in our excellent clinical facilities and vision centre. Our multidisciplinary teaching team offer you cutting edge teaching and learning opportunities.

Scottish Higher requirements

Scottish Higher: standard requirement is 4 Highers at BBBC; minimum BCCC (include Higher in 2 from Maths, Physics, Chemistry, Biology, Human Biology or Environmental Science)

Alternative requirements

HNC: HNC in Science or health-related HNC with Graded Unit – B required

A level: BCC (incl 2 sciences from Biology, Chemistry, Physics and Maths)

ILC Higher: H2 H3 H3 H3 (incl two Sciences from Pyhsics, Chemistry, Biology and Maths)

Contact

For any additional admissions queries, please contact: studentenquiries@gcu.ac.uk



Orthoptics (MSc) in London

UCL Institute of Ophthalmology is ranked the best place in the world to study ophthalmology (CWUR Rankings by Subject 2017). Our partnership with Moorfields Eye Hospital represents the largest co-located site for eye research, education and care in the world. The UCL Orthoptics MSc was the UK's first dedicated graduate-entry programme that enables students to qualify and practice as an accredited Orthoptist.

During this 2-year, accelerated-learning programme, you will learn about paediatric ophthalmology, strabismus (ocular misalignment), ocular motility disorders and other eye and vision health issues and diseases from world-leading academics. Students will also have the opportunity to undertake 1000 hours of supervised clinical practice in a mix of day and block clinical placements.

Entry Criteria

Applicants with a minimum 2:2 Bachelor's degree in a relevant discipline from a UK university or an overseas qualification of an equivalent standard. Relevant subject areas include: biological sciences, chemistry, nursing and psychology. Shortlisted candidates will be invited to a group interview.

Life at UCL

Studying is an important part of your time at UCL but there's lots of living to do as well. As an Orthoptics students, you will not only have access to all of UCL's vast clubs, societies and facilities, but you'll also be studying in one of the world's greatest capital cities, providing unparalleled access to a wealth of theatres, events, shops, restaurants and museums.

Contact

For further information, please visit: ucl.ac.uk/iao/study/study-orthoptics-pre-registration-msc-ucl

For queries, please contact: iao.admissions@ucl.ac.uk

The British and Irish Orthoptic Society

Orthoptists are a member of the Allied Health Professions (AHPs), a family of healthcare specialists who provide treatment and help to rehabilitate patients; spending their careers helping others live the fullest lives possible. They work directly with patients, where they can really see the difference they make to people's everyday lives.



BIOS | **BRITISH AND IRISH
ORTHOPTIC SOCIETY**

The British and Irish Orthoptic Society (BIOS) is the professional body for orthoptists representing over 1,500 orthoptists and students across the UK and Ireland.

Our members in the UK are also automatically members of the British Orthoptic Society Trade Union (BOSTU), which is affiliated to the TUC.

We are primarily responsible for developing and maintaining professional standards across the profession and overseeing the quality of orthoptic education. We also provide support and representation to our members, raising awareness of orthoptics with the public, representing the profession with policymakers and commissioners, and producing high-quality professional guidance and CPD events.

As an orthoptics student, you'll be entitled to **free membership** of BIOS! Students benefit from:

- Access to members' forums, to share and ask questions
- Weekly e-zines with information from across the profession
- Quarterly student e-zine
- Access to PERL, our library of resources to support students
- Free online CPD events
- Resources and guidance on getting involved with promoting the profession

You also receive free full membership for the remainder of the year following graduation and discounted membership for their first full year!

Find out more at: [orthoptics.org.uk](https://www.orthoptics.org.uk)

Placements

Placements are a compulsory part of the course and are allocated for you. You could be based anywhere across the UK, Ireland and Gibraltar.

As part of the course structure, a total of 33 weeks clinical experience will also be undertaken across the course of study.

Students studying in England may be eligible to apply for financial support from the Learning Support Fund (LSF).

This offers extra support for:

- Students with at least one dependent child (Child Dependents Allowance)
- Travel and Dual Accommodation Expenses to cover the cost of placements
- Students experiencing financial hardship (Exceptional Support Fund)

An overview of where placements are located can be seen on this map



How to apply

UCAS

Applications are made through the Universities and Colleges Admissions Service (UCAS). When applying the course code is B520.

The deadline for UCAS applications is January each year (see UCAS for specific date). Applications to study Orthoptics made after this deadline may be considered however this is dependent on course demand and may vary amongst Universities.

If you've used all five choices, and you're not holding any offers, you'll be able to add another choice using Extra. Extra is another chance for you to gain a place at university or college, between February and July.

Selection of applicants for interview is based on your overall application. The aim of the interview is to explore your suitability to study the degree and demonstrate an awareness and ongoing commitment to the NHS values.

Fees and funding

Student Loan

Students will have access to the standard student support system provided by the Student Loans Company (SLC) to cover the cost of their tuition fees and means-tested support for living costs.

NHS Learning Support fund

Students studying Orthoptics in England may also be eligible to apply for the NHS LSF. If eligible, students may be able to get:

- a Training Grant of £5,000 per academic year
- an extra Specialist Subject Payment of £1,000 per academic year
- Parental Support of £2,000, if you have at least one dependent child under 15 years, or under 17 years if registered with special educational needs
- money back for excess travel and temporary accommodation costs (Travel and Dual Accommodation Expenses) while you're on your practice placement





For Further Information:

The British and Irish Orthoptic Society

Web: <https://www.orthoptics.org.uk/>

Email: bios@orthoptics.org.uk

Phone: (0)121 728 5633

