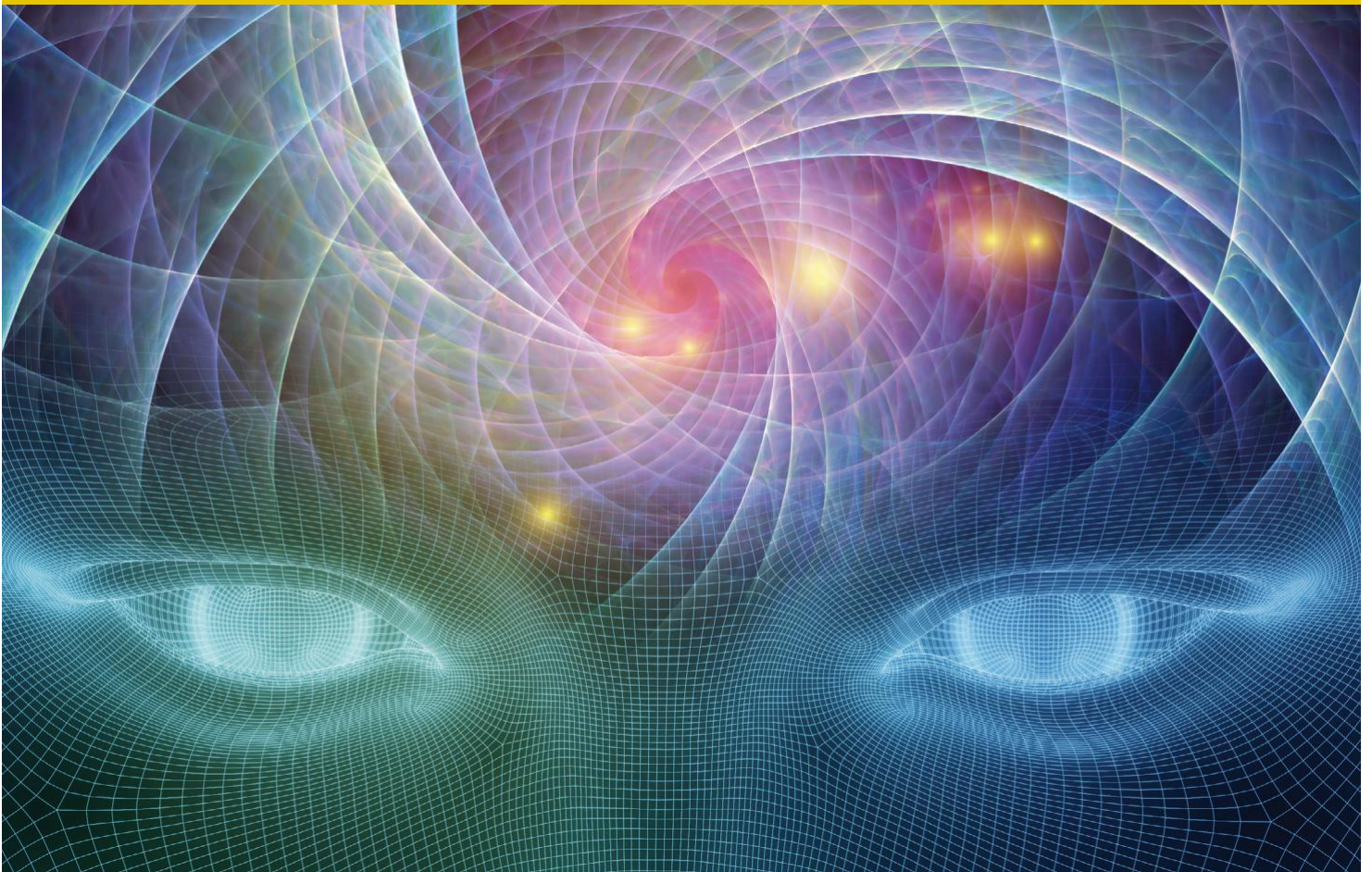




**BIOS** | **BRITISH AND IRISH  
ORTHOPTIC SOCIETY**

**Easy Read Version**

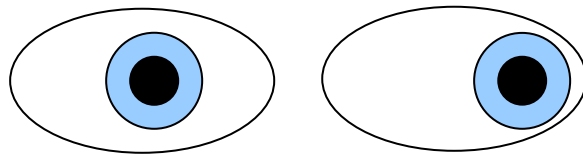
**Eye movement problems following  
stroke and brain injury**





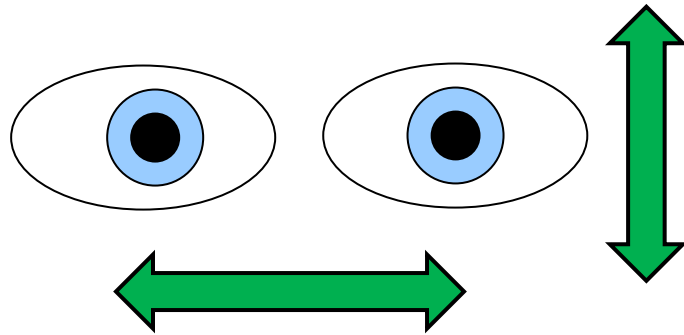
# Eye Movement Problems following Stroke and Brain Injury

## Squint



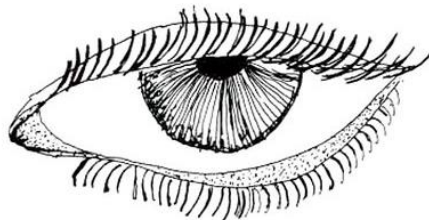
- wandering eye
- constant or occasional
- double vision
- jumbled vision
- no 3D vision

## Slow and fast eye movements



- problems following a moving target
- problems moving eyes quickly
- problems moving eyes sideways or up and down
- weak eye muscles

## Eyelid



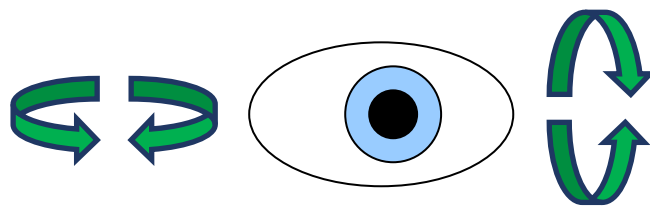
- droopy eye lid
- cannot close eyes properly

## Loss of 3D vision



- cannot judge distances
- difficulty with steps and stairs
- risk of falls

## Nystagmus



- eyes wobble
- images move about

## Symptoms



Blurred or distorted vision



Double vision

- blurred vision
- eye strain
- reading problems
- might close one eye
- dizzy
- loss of balance
- double vision

## Driving



- cannot drive with double vision
- prism can help
- orthoptist will explain
- inform DVLA

## Treatments



- eye exercises
- prisms join double vision
- eye patch
- surgery

## Recovery

- can recover completely
- may take a long time
- might not recover

This leaflet was made by the Stroke and Neurological Rehabilitation Clinical Advisory Group in February 2022.



**BIOS** | BRITISH AND IRISH  
ORTHOPTIC SOCIETY

see [www.orthoptics.org.uk/](http://www.orthoptics.org.uk/) for more information